



F&F Filipowski sp. j.
ul. Konstancyńska 79/81
95-200 Pabianice, POLAND
tel/fax +48 42 2152383; 2270971
e-mail: fif@fif.com.pl

CP-721

VOLTAGE RELAYS

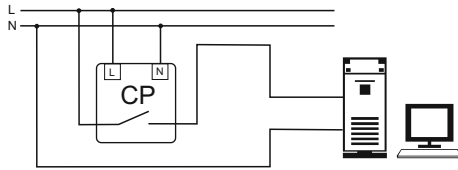


www.fif.com.pl

F&F products are covered by an 24 months warranty from date of purchase

PURPOSE

Voltage relays CP-721 serves to voltage control in single and three phase mains and to protect receiver against the effects of voltage collapse or increase beyond set values.



SETTING TIME ACTIVATION

The time t_L (for low threshold voltage)

In work mode hold (> 5 secs.) Button -. The display shows the symbol t_L . Press the + / - to make setting the response time of 2 to 10 seconds in increments of 1 sec. After 5sec. inactivity will automatically return to operating mode (indicating the value of the voltage measured) and the relay will automatically start to work with the new settings.

Time t_H (for the upper threshold voltage)

In draft mode and hold (> 4 sec.) Button -. The display shows the symbol t_H . Press the + / - to make setting the response time of 0.1 to 1.0 seconds in increments of 0.1 sec. After 5sec. inactivity will automatically return to operating mode (indicating the value of the voltage measured) and the relay will automatically start to work with the new settings.

SETTING THE RETURN OF T OF TIME

TP time (for the lower and upper threshold voltage)

In draft mode and hold (> 5 secs.) + And - buttons. The display shows the symbol P. Using + / - button to make the setting value of time delay. The displayed values and their meanings:

2 to 9 - Adjustment range from 2 to 9 seconds in increments of 1 sec.
10 to 1 - set the time range from the 10s. for 1 minute. increments 5sec.
1 to 9.5 - Setting range of time from 1 min. to 9.5 min. in increments of 30 seconds. (1.3 = 1min30sek; 2.0 = 2min, 9.3 = 9min30sek)

After 5sec. inactivity will automatically return to operating mode (indicating the value of the voltage measured) and the relay will automatically start to work with the new settings

ASSEMBLY

1. Take OFF the power.
2. Put on the relay on the rail in the switchgear box.
3. Connect power cables to joints 5-6 with marks.
4. In power installation of care receiver connect in line a joint 2-1 or 4-3.
5. Set to voltage thresholds UL and UH, activation times t_L and t_H , return time t_P .

FUNCTIONING

In run mode the display shows the actual measured value of voltage.

User adjustable bottom (U1) and upper (U2) determines the so-called threshold voltage. voltage window, within which may be followed by changes in supply voltage does not cause the relay. With proper voltage relay contact is closed. Changing the supply voltage above or below the set threshold voltage will open the interface with the time delay preset by the user. Glowing red LED indicates the state of contact closure. Exceeding the voltage above 5V from the established threshold values UH and UL is indicated by the pulsation of the display.

Return join the relay contact will occur automatically in the event of a sustained voltage of 5V with respect to threshold values UH and UL by the time of return set by the user.

The relay can be supplied with a voltage up to 450V-. This ensures the effective protection of the receiver even in case of a voltage increase beyond allowable standards. Also, in case of supply polarity exchange or when "zero" is switched off (for three-phase types) the relay will not be destroyed ("burned").

PROGRAMMING

SETTING VALUES of THRESHOLD ACTIVATION

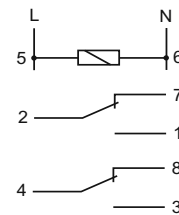
UL threshold (bottom)

In draft mode briefly (< 1 sec.) Button -. The display shows the symbol -UL. Press the + / - to make the setting threshold value. After 5sec. inactivity will automatically return to operating mode (indicating the value of the voltage measured) and the relay will automatically start to work with the new settings.

UH threshold (top)

In draft mode briefly (< 1 sec.) Buttons +. The display shows the symbol -UH. Press the + / - to make the setting threshold value. After 5sec. inactivity will automatically return to operating mode (indicating the value of the voltage measured) and the relay will automatically start to work with the new settings.

WIRING DIAGRAM



TECHNICAL DATA

supply	150+450V AC
current load	2x[<8A]
joint	separate 1P (1CO)
voltage activation threshold	
lower UL	150+210V/ 1V
upper UH	230+260V / 1V
activation time	
for UL	2+10sek / 1sek
for UH	0,1+1sek / 0,1sek
return time for UL/UH	2sek+9,5min
power consumption	0,8W
settings level	1V
measure level	$\pm 1V$
display	3xsegments LED 5x9mm
signaling of switching of joint	LED red
working temperature	-25+50°C
connection	screw terminals 2,5mm ²
dimensions	2 modules (35mm)
fixing	on rail TH-35

C111129/120611